

DEEP LANDING WORKSHOP

JANUARY 2012



CUSTOM LIGHTING

115 DEEP LANDING ROAD
CHESTERTOWN, MARYLAND
21620

410-778-4042 fax 410-778-4070
toll free 877-778-4042

www.deeplandingworkshop.com

A PHOTO GALLERY



The new Deep Landing Workshop

Joseph R Ramsey, Jr circa 1965
1921-1985
Our founding father



Mr. D.L. Workshop, hisself, aka John R Ramsey
circa late 1980's, in the old shop



Mr. D.L. Workshop negotiates a sale in the old
shop's office, sometime in 2001



Chuck Aaron

John Bill



Austin



S-1
shown
15" high
7" wide

S-1A
not shown
16 1/4" high
8" wide
Based on the
Carpenter Hall sconce
from Philadelphia, PA.
This was one of the
first designs modified
by Cynthia Ramsey



Chetty Sconce

This is an example of our custom work.
A design was adapted from the
Connecticut sunflower chest popular
during the William and Mary period,
executed in lead coat copper for that old
pewter look, and set in a wood frame with a
brass candle holder.
30 inches high 20 inches wide



S-KM3
24" high
13 1/2" arm spread
Hand-carved wood
23k gilding



Arm Detail

All in the family

The only difference between the S-44 and the S-44A is that the top of the S-44 is slanted forward to form a hood. The S-46 is the same as the S-44A but with different finials. You can have us create your own custom finials.

For the mirror, we use silvered hand-made glass.



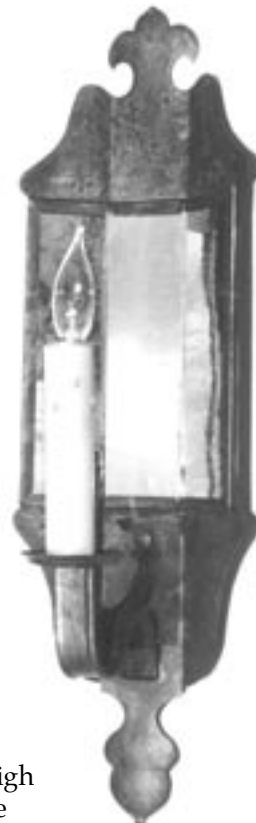
S-44A
 16" high x 5" wide
 projects 5"
 Old Tin



S-44
 16" high x 5" wide



S-45
 15" high x 4 3/4" wide
 Antique Brass



S-46
 17 1/2" high
 5" wide



S-48
 12" high x 4" wide



S-55A-3
13" high x 4 ³/₄" wide
projects 7"
7" arm spread



S-56-3
14 ¹/₂" high x 5 ¹/₂" wide
projects 7"
7" arm spread
also

S-56-2 not shown
as above but with 2 arms



S-56A-2
18" high x 6 ¹/₂" wide
projects 6 ¹/₂"
7" arm spread
also
S-56A-3
not shown
as above, but with 3 arms



S-55-3
15 ¹/₂" high x 5" wide
projects 7"
7" arm spread



S-55-1
14 ¹/₂" high
x 5" wide
projects 5 ¹/₂"



S-270
12" high x 7" wide
projects 4 ¹/₂"



S-263
 13" high x 7 1/4" wide
 12" arm spread shown
 projects 6 1/2" from wall



S-262B
 12" high x 5 1/4" wide
 13" arm spread shown
 6" projection from wall
 shown in DLW antique copper



S-30
 back is 9" x 5"
 overall height is 10"
 projects 7"



S-30B
 Back is 12" x 5"
 overall height is 13"
 projects 7"



S-32B
 12" high x 5" wide
 7 3/4" arm spread
 projects 5 1/2"



S-261
 9 3/4" high x 4 3/4" wide
 projects 4 1/2"



S-16B
 8 1/2" x 4" wide projects 4 1/2"
S-16 not shown
 6 1/2" x 3 1/4" wide

S-16 family
 The S-16, also known as the Tombstone sconce, was first made for the White Swan Tavern in Chestertown. The S-261 was made to cover larger electrical boxes. There are many ways to personalize this simple design, i.e., the S-16A with shell and the S-19 with fleur de lis. Sconces with 2 arms can have a minimum 10 inch spread; maximum can be up to 24 inches, but the back should be enlarged in such a case.



S-162A
 8 1/2" high x 3 1/2" wide
 10" arm spread shown
 not shown



S-16A
 8 1/2" x 3 1/2"
 projects 4"
 with optional shell



S-19
 8 1/2" x 3 1/2"
 projects 4"

S-162
 6 1/2" high 3 1/4" wide
 arm spread to order

S-162B
 8 1/2" high 4" wide
 arm spread to order



S-262 with 1/2 relief wren on one arm
 16" arm spread



S-262
 9 3/4" high x 4 3/4" wide
 14" arm spread shown



In spite of their size difference, the S-3392 and the S-33 are of the same family. Both sconce bodies are hand raised, hammered into a convex shape. The S-3392 could be made the same size as the S-33. The S-33 could be made with fans both top and bottom, or with none at all.

S-3392

30" high x 15" wide
 12" arm spread
 projects 10"



S-33

17" high x 10" wide
 10 1/2" arm spread projects 7 1/2"
 dark antique copper - note the green tones



S-70

The pineapple, a sign of hospitality
 10 1/2" wide x 15 1/4" high
 projects 6"

S-33B
 17" high x 10" wide
 arm spread is 10 1/2"
 projects 7 1/2"





S-2
14 1/2" high x 9 1/2" wide



S-21
12 1/2" high x 5 1/2" wide



S-21A
10" high x 5 1/2" wide



S-50
13" high x 9" wide



S-22
10" high x 6 1/2" wide



S-75
The Montchanin sconce
8 1/2" wide x 14" high
projects 7 1/2"



S-6
 13" high x 4" wide



S-4A
 14" high x 5 1/2" wide
S-4
 11" high x 4" wide
 not shown



S-10
 13" high x 4" wide



S-5
 14" high x 6" wide



S-3
 14" high x 5" wide



S-125
 Back plate is 8" high x 5" wide
 5 arms with a spread of 24" as shown
 arms project 12" from wall
 Many variations on this theme are possible.
 Shown with an optional crow



S-49
9 3/4" high x 3 1/2" wide



S-12A
17 1/4" high x 11" wide
projects 5"



S-730
13" high x 9" wide
with a buffalo cut-out



S-100
12 1/2" high x 9 1/2" wide



S-343
 15 1/2" high x 10" wide
 12 1/2" arm spread
 projects 7"



S-342
 11" high x 7" wide
 10 1/2" arm spread
 projects 5 1/2"



S-25
 14" high x 10" wide
 projects 6 1/2" from wall
 S-25B not shown
 3 arms
 15 1/2" high x 11" wide
 projects 7 1/2"



Tully Sconce
 12" high x 10" wide



CH-9600

The chandelier that coined a phrase, drop dead elegance. It has a 23k gold leaf finish on a hand carved wooden spindle. Finished off with a carved and gilded tassel, this chandelier is truly awe-inspiring
34" high 52" diameter with 20 arms as shown. Smaller sizes and single tier versions are available, as are painted versions.

CH-9610A

24" high, including tassel
36" arm spread shown
with 8 arms



CH-9610

20" high, including tassel
34" arm spread shown
with 6 arms



**CH-9610B-G**

28" high with tassel
44" long 32" wide
in an oval configuration
10 arms

**CH-960A**

84" high spindle
72" arm spread with 28 arms in a 4-8-16
configuration on 3 tiers
75 pounds

CH-1200

41" overall height including the top ring and bottom tassel

38" diameter candle to candle with 6 candelabra candles
60 watt max each



CH-F1006

"Bringing in the sheaves"

25" high
18" overall diameter
13 1/2" diameter
Antiqued gold finish
5 candelabra sockets



S-1200

A sconce designed to compliment the CH-1200 chandelier.

Overall height is 14 1/2", arm spread is 12 1/2" overall

CH-OCT07

An oval octopus chandelier, 21 1/2" high to the top of it's dried gourd head, 36" by 25" arm spread, 8 candelabra lights, 60 wat max each.





CH-650-16

16" high 30" arm spread 7 arms shown
 additional stock sizes: 13" and 20" high
 options shown: cherry spindle



CH-652

18" high with 30" arm spread shown
 12 arms (4 over 8 double tier. It could be 6 over 6)
 options shown: bell bobèche and cherry spindle



CH-700

17" spindle 30" arm spread 6 arms shown



CH-1000

13" spindle with 24" diameter shown
 additional stock sizes: 16" and 19" high



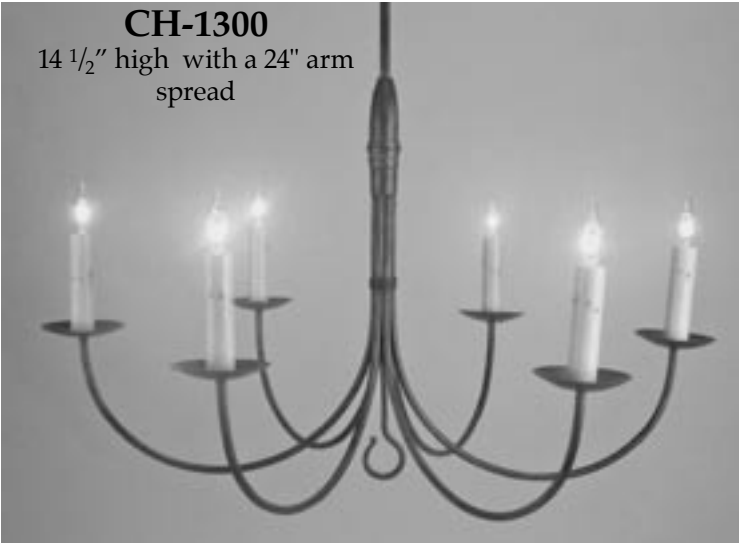
CH-200

16" high 28" arm spread
 6 arms



CH-900

13" high
 24" arm spread
 7 arms



CH-1300

14 1/2" high with a 24" arm spread



CH-1300

16 1/2" high (including ring)
and requires 21" overall height
option shown: "wireless" ring & hook



CH-1309B

27" high to the top of ring
36" arm spread shown
options shown:
hawk cut-out and
"wireless" hook and ring

The basic model is
CH-1309. It is 23"
high without
the ring, with a
24" arm spread.



CH-1308B

19" high (including ring) and requires 24" overall height
36" arm spread with 8 arms.
This is a larger chandelier with a flatter profile.
Shown with 6" high candles.



CH-1308

21" high
30" arm spread 8 arms



CH-1363

54" high, 32" arm spread shown with 12 arms
 3 tiers in 3-6-3 arm configuration
 Hand-turned bottom brass ball is standard



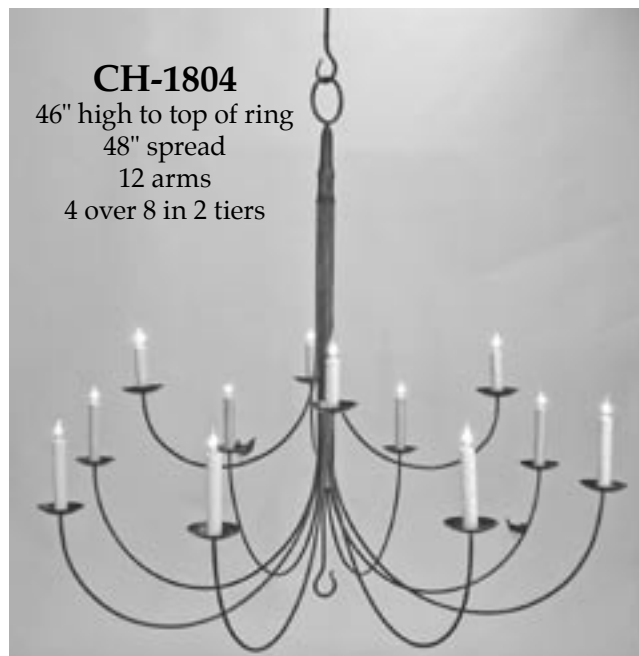
CH-1484

54" high, 36" arm spread shown with 16 arms
 3 tiers in 4-8-4 arm configuration
 Hand-turned bottom brass ball is standard
 option shown: "wireless" hook



CH-1488

43" high 42" spread
 16 arms on 2 tiers
 option shown:
 "wireless" hook



CH-1804

46" high to top of ring
 48" spread
 12 arms
 4 over 8 in 2 tiers



CH-9030

23" high, 24" arm spread with 6 arms
Hand-turned bottom brass ball is standard
Both the CH-9030 and CH-9031 could easily be fitted
with the "wireless hook".



CH-9031

Same as CH-9030 but without bottom skirts
between the arms.



CH-9038B

An Oval Configuration
48" long x 36" wide x 32" high
Optional small wooden spindle at the top
Hand-turned bottom brass ball is standard



CH-9038

36" long x 24" wide x 29" high
Optional small wooden spindle at the top

CH-9010

Another Tully-commissioned light; it was inspired
by the venerable CH-1300,
but redesigned for the 20th century.
Note the stylized pine cone adornments
on each arm. It can't be seen in black and white,
but each pine cone is gilded.



**CH-1800B**

15" high, 36" arm spread with 8 arms

**CH-1800**

12" high, 36" arm spread shown with 8 arms

**CH-1844B**

28 1/2" high including ring
 40" arm spread shown
 16 arms on 3 tiers

**CH-9094-R**

The circular version of the CH-9094 oval chandelier
 shown on the next page
 42" arm spread, 21" high with 12 arms

CH-1800C

16" high, 42" arm spread
 shown with 12 arms





CH-9094-57

57" long by 16" wide 21 inches high to the top of the ring

There are 10 arms set in an extreme oval. It is for a long narrow trestle table and comes with a 120 volt halogen down light that is switched separately. Note the small knob to the left of the center. Standard on the CH-9094 is the "wireless hook.". This design can be made in many different sizes.



Center Detail
This shows the decorative "leaves" concealing the electrical junction box, and the switch knob. At the bottom is the bell housing a 120 volt MR-16 halogen bulb.



CH-9094-39

39" long by 18" wide.



CH-9094-57 custom

57" x 18" version in brass
options shown are flower bobèche
and half relief cut-out wrens



CH-7000B

14" high spindle 21" arm spread with 4 arms



CH-7000

21" high to the hook 40" arm spread with 12 arms



C-300

12" high including ring 25" arm spread
 center down light switched separately ALSO

C-300B

16" high 30" arm spread 8 arms



CH-150

18" spindle 30" arm spread with 8 arms



C-160

17" high 36" arm spread with 8 arms
 center down light switched separately



C-150

15" high 26" armspread with 6 arms
 Can be ordered without the pierced design,
 or you can order a custom design.
 Center down light switched separately



CH-400

11" high 24" arm spread
6 arms
shown with optional flower bobèche



CH-400-S

11" high 24" arm spread
6 arms



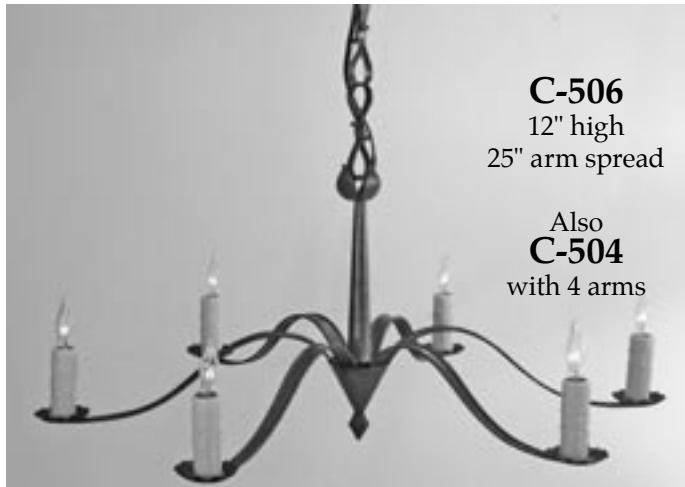
CH-1100

20" high 34" arm spread with 16 arms



CH-1133

32" spindle
46" arm spread
18 arms



C-506
12" high
25" arm spread

Also
C-504
with 4 arms



CH-7000B

14" high spindle
22" arm spread



CH-500
 9" high cherry spindle
 26" arm spread with 6 arms



CH-525
 7 1/2" spindle
 22" arm spread with 4 arms



CH-9060
 9" spindle 14" high with ring
 18" arm spread with 3 arms



C-600
 19" high 25" arm spread



CH-9060C.5
 9" high spindle, 12" to the top of the ring
 29" diameter, 5 arms with candelabra sockets



CH-585
 6 1/2" high including candle
 13" arm spread

C-2000

14" high including the ring.
25 1/2" high including 11" candles as shown
36" arm spread with 12 arms



CH-9000A

19" high to top of the ring 30" arm spread
9 arms on wood spindle.



CH-8000

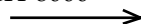
35 " diameter 42" high with 8 lights
This is a cross between a chandelier and a pendant.
It can be made with or without the center turning.
This unique design begs to be made
with more height to give a more vertical feel.



A perfect twist
for the CH-8000

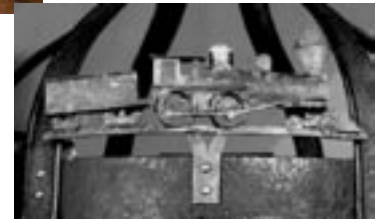


A perfect cherry
center for the
CH-8000





The possibilities for cutouts are infinite. Some of the more ambitious are shown here.



CH-1601

14" high 30" arm spread
 6 arms

This chandelier can be fitted with a 12 volt halogen down light that is switched separately. The transformer is included.



Detail of halogen down light



CH-1601

Shown with optional "wireless" ring and hook



Buffalo



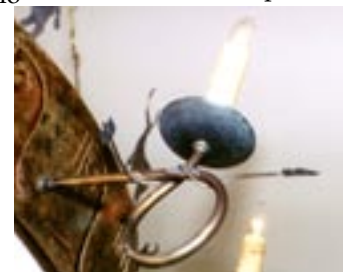
Antelope

CH-FENNY

"The Southwest meets the Plains, and it will never be the same."

42" diameter 46" high The ring is 32" in diameter.

It is made of brass with a pierced design from the San Ildefonso tribe and backed with mica. Topped with a parchment teepee, which could be treated with custom designs. 12 candelabra outside lights and 4 standard sockets (100 watt max each)



arm detail



CH-MONT-A

48 arm chandelier
96" arm spread 78" high spindle
wood spindle with faux iron finish



CH-MONT-C

62" high 72" arm spread
32 arms

not shown

CH-MONT-B

70" high with 40 arms

NOTE:

CH-Mont is a shortening of the name of the CH-MONTCHANIN which was named after the Inn at Montchanin Village. It was for the inn that we created this design. It is shown above.

All the CH-MONT series chandeliers have twice as many arms on the middle tier as there are on the top and bottom tiers.

This gives a spherical impression when viewed from below.

The next smaller size would have 28 arms, in a 7 - 14 - 7 configuration, and so on.



CL-Thayer

An 18-inch diameter pendant fixture featuring:
 A wrought-iron wreath hand forged by Thomas Moore
 supporting an alabaster bowl, ringed with
 a waterjet cut original design backed with mica and
 supporting hand-formed half relief wrens.
 All lit with four 100 watt bulbs



L-9300A

11" high 8" wide
 2 candelabra sockets

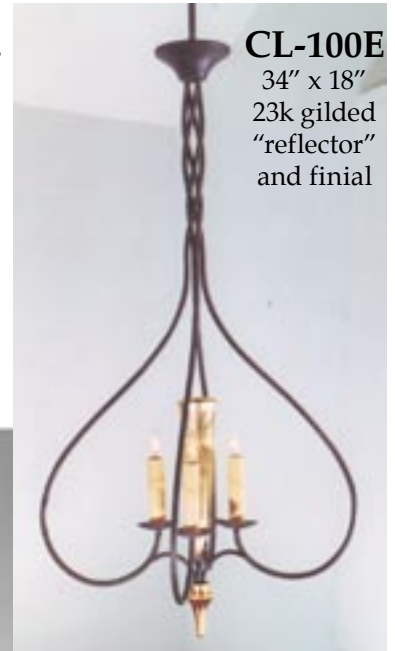


L-9300

13" high 8" wide
 2 candelabra sockets



No fixture has spawned so many variations as quickly as the CL-100 pendant. The original has the arms twist into a font that hangs from the ceiling electrical box by a straight rod. We supply our own canopy (not shown) to cover the electrical box. If your ceiling isn't high enough for this set up we can make it to mount directly to the ceiling. See CL-100C . The center reflector and finial are turned wood and can be treated to any of our faux finishes as well as being painted to match your swatch.



CL-100E
 34" x 18"
 23k gilded "reflector" and finial

CL-100B
 27" x 18"
 faux bronze "reflector" and finial
 Verdigris finish on metal parts

CL-100
 27" x 14"
 23k gilded "reflector" and finial



CL-100C
 30" x 16"
 the "reflector" has been deleted and the finial has been replaced with a ring. The candles have been extended from 4" to 6". This is set up for direct ceiling mount



CL-10
 6 1/2" high 8 1/4" long 6 1/2" wide with an open bottom
 2 candelabra sockets



CL-10A
 6 1/2" high 6" square, 1 candelabra socket



CL-96B
 24" high 21" wide
 direct ceiling mount with 6 lights



CL-96
 13" high 21" wide
 direct ceiling mount with 6 lights



CL-95
 9" high 15" wide
 direct ceiling mount with 4 lights



CL-120
 16" high 11" wide
 2 lights



L-2
 9" high x 5" wide
 2 lights
 different sizes and number of
 candles are available.
 Be aware that this fixture casts a
 shadow directly beneath it.



L-100-BR
22" high 10 1/2" wide
polished antique brass shown

L-100 Series
Another design that has generated many variations. Because these lanterns are not cast, but made from heavy sheet copper (for our "wrought-iron" finish) or brass, we can change the size or proportions to suit.

The shell can be replaced with any type of finial, from fleur de lis (L-105) to acorns, to whatever. It can also be replaced with a plain simple arch, as in the L-101 and L-102.

All lanterns pictured have our wrought iron finish except the L-100A custom.

The larger lanterns usually have 4 lights and the smaller 3, but that can be changed.

These are interior lanterns, but can be wired for damp locations if well protected from direct weather.

Please specify



L-107-WI
22" high 10 1/2" wide



L-100A-WI
15 1/2" high 7 1/2" wide
designed to give head room on an 8' ceiling
shown with stem and canopy
to give an OAH of 18"



L-102VDL-WI
20" high 18" long
12" wide
6 candelabra lamps

**L-112-WI**

A large 18" square by 36" high.
This imposing lantern sports 8 candelabra lights
on 2 tiers. A perfect over the table solution
instead of a chandelier.

L-101-WI

15 1/2" high
7 1/2" wide

**L-103A-WI**

13" high
5 1/2" wide

**L-103-WI**

16" high 5 1/2" wide

**L-103B-WI**

12" high 5 1/2" wide
Shown with an OAH of 14"

410-778-4042 877-778-4042



L-101B-CU
18" high x 8 1/2" square
antique copper finish
3 candelabra sockets



L-102-WI
22" high 10 1/2" wide
4 candelabra sockets



L-106B-WI
18" high
8 1/2" wide



L-105-WI
15 1/2" high
7 1/2" wide



L-2000
28 1/2" x 11"
3 candelabra sockets



L-2500
18 1/2" x 4 1/2"
shown with old pewter finish
1 candelabra socket
Make me larger



L-420
21" high 12" wide
3 candelabra lights



L-1251H
17" high, not including ring
Shown with 3" ring and
hand-made ribbon chain.
10 1/2" wide
4 candelabra sockets
60 watt max each

410-778-4042 877-778-4042



L-1265

31 1/2" high, not including ring
19" wide
40 pounds including chains
4 medium sockets, 60 watt max each

L-1265B

24 1/2" high, 14" wide, 15 pounds
4 medium lamps

L-1265C

36" high, 21 3/4" wide, 34 pounds
6 candelabra sockets,



L-1260B07-H

29 1/2" high including ring 16" square
4 candelabra sockets



L-1265GH

59 1/2" high including ring 31 1/2" square
6 medium sockets 60 watt max each
restoration glass is not available

**L-1260-LB10**

lantern body 25" high 14" wide
bracket is 31" high 6" wide
4 medium sockets

available but not shown

L-1261-LB10

lantern body 17" high 10 1/2" wide
3 candelabra sockets

L-1260B-LB10

lantern body 29" high 16" wide
44 1/2" OAH
4 medium sockets

**L-1260B-HF**

29" high 16" wide, projects 8 1/2"
2 medium sockets

available but not shown

L-1261-HF

18" high 10 1/2" wide
2 candelabra sockets

**L-1691-LB8**

35 1/2" overall height
projects 14"
lantern body is 20 1/2" high
including the 3 1/2" ring
12" wide
21" from the bottom of the bracket
to the center of the j-box
3 candelabra sockets



L-1250-LB3

lantern body is 23" high
and 14" wide
bracket is 30 1/2" high
and 3" wide

available, but not shown

L-1251-LB3

lantern body is 17" high
and 10 1/2" wide



L-1490

28" overall height including post fitter
21 1/2" x 16" lantern body
including 2 1/2" finial
3 candelabra sockets

L-9510

The Moore Lantern
40" high 17" wide
bracket is 30 1/2" high 10 1/2" wide



L-1250 Post
Lantern body 25" high 14"
wide
34" overall height
4 candelabra sockets



L-1260 Post
Lantern body 25" high 14" wide
34" overall height
4 standard sockets



L-1261 Post
Lantern body 17" high 10 1/2"
27" overall height
4 candelabra sockets



L-9200
The Bender Lantern
16 1/2" high 9 1/2" wide



L-1020
Lantern body
25 1/2" high
x 15 1/2" wide
Overall height 35"



L-1300
Overall height 30"
13 1/2" wide
1 medium socket



L-405 Post
24" high 10 1/2" wide
3 candelabra sockets



L-1270
44" high
15 1/2" wide
3 medium lamps

**L-1400 Post**

Lantern body is 20 1/2" high x 12 1/2" wide
Overall height 26 1/2"
Antique Copper
3 candelabra sockets or 1 medium socket

**L-1400-LB8**

Lantern body
20 1/2" high x 12 1/2" wide
LB-8 bracket 31" high

**L-1800-P**

40" overall height
The lantern body is
30" high and 17 1/2" wide
1 medium socket, 100 watt max

L-1850-SCR

19 1/2" high lantern body
14" diameter
58" wide scroll Projects 15 1/2"
12" from the bottom of the lantern
to the center of the electrical box.
3 candelabra sockets, 60 watt max each
Finish - dark lead coat copper, faux iron scrolls





L-1200-OC
Lantern body 18" high x 12" wide



L-1291-OC
Outside Corner Mount
Lantern body 18" high x 12" wide



L-1690-SCR
Lantern body
21" high x 12" square,
46" wide scroll shown
projects 18 1/2"
3 candelabra lamps
relationship to the j-box to
specifications
finish - antique copper

L-9400-SCR
The Lesser Lantern
20 1/2" high 9" wide.
Scroll is 42" wide as shown
3 candelabra sockets





L-1600

16" high 8" wide 7" deep
3 candelabra sockets
finish - antique brass

not shown **L-1610**

14" high 7" wide 6 1/4" deep
2 candelabra sockets



L-1650A

17" high x 8" wide x 7" deep
Projects 7 3/4"
finish - lead coat copper



L-1600C04

21 1/2" high x 12 1/4" wide
projects 9 1/2",
2 medium sockets



L-1620

12 1/2" high 7" wide 5" deep
with an open bottom



L-1652

13" high 7" wide 5" deep
Open Bottom



L-1613

16 3/4" high 5 1/4" wide
projects 5"
Antique copper



L-1650

18" high 8" wide
projects 7"



L-403

shown with the optional "wireless ring & hook"



L-403

14 1/2" high 10 1/4" wide
exterior or interior
finish is dark lead coat copper
3 candelabra sockets.
4 light is available



L-402

14" high to the top of
the ring x 8" wide
18" OAH

also
L-402A

12 1/2" high to the top of
ring x 8" wide
16 1/2" OAH



L-407

18" high including ring
10 1/4" wide
3 candelabra sockets

L-402A-LB4

Lantern body is 12 3/4" high
with 3" ring
8 1/4" diameter
Projects 10"
Center of junction box to
bottom of lantern= 9"
3 candelabra sockets, 60 watt
max each





L-171B-15

19" high 8 1/2" wide
Overall height 25" Projects 12"
shown with 3 candelabra sockets



L-171

14" high 5" wide
2 candelabra sockets
cut out in bottom for down light

L-171A not shown
15 1/2" high 5 1/2" wide
Both sizes can be made
as a hanging lantern



L-172DP

32 1/2" high x 10" square
The lantern body is 23" high,
3 candelabra lamps
or 1 medium lamp



L-171B

19" high 8 1/2" wide
shown with 1 medium socket



L-171C

10" high 4" wide projects 5 1/4"
option shown - faux rust

L-172A
10 1/4" high 5" wide
Any of the L-170 series
lanterns can be fitted
with glass protectors as
shown here
2 candelabra sockets





L-181P
"Whimsy"
Lantern body
16 1/2" high
5 1/2" wide
35" total height



L-181XP-LB2
Same as L-181
but with
glass guards



L-181-LB-2 Bracket
Lantern Body
15" high x 5" wide
24" from the top of the bracket
to the bottom of the lantern
19 1/2" from the center
of the electrical box to the
bottom of the lantern



L-450-LB-1
Lantern Body
15 3/4" high x 6 1/4" square
25" from the top of the bracket
to the bottom of the lantern
20 1/2" from the center of the
electrical box to the bottom
of the lantern
3 candelabra sockets

**L-930-LB6**

23" overall height
lantern body is 20 1/2" high
including the 3 1/2" ring
5 1/2" wide
10 1/2" from the bottom of the lantern to the
center of the junction box
Junction box cover is 5" square.
3 candelabra sockets. 60 watts max each.

**L-1910**

ornate octagonal lantern
24" high 7" wide
4 candelabra lights
mica in narrow sides
open bottom and top
wired for damp or dry locations

**L-1296**

13" high x 9" wide
projects 5 1/4"
2 candelabra sockets

**L-190**

9 1/2" high x 6" wide

L-190B not shown
11 1/2" x 6" wide



L-1550

Same size as L-1500
Differences are the open bottom for
down light and 2 candelabra sockets.
It can be made with a solid bottom and
3 lights. Note the "French doors"
for that indefinable difference.
There's mica in that dome,
or glass if you prefer.

L-1500*
16" high 9 1/2" wide
3 candelabra sockets

L-1510*
not shown
13 1/2" high 6 1/2" wide
2 candelabra sockets



*copyright Peter Newlin A.I.A.

L-1500E
19 1/2" high with ring
16" high lantern body
9 1/2" wide 7 3/4" deep
projects 8 1/4"



L-195
15" high
8 1/2" wide
projects 8"

L-199
10 3/4" high x 8 1/2" wide
x 4 1/2" deep, 6" along sides.
This is a 45-90-45 degree
triangular lantern,
designed to fit
inside a corner.





L-250-H
Hanging lantern
16" high including ring
5" wide with open bottom
for down light



L-252-H
Hanging Lantern
15" high including ring
5" wide



L-251-W
Wall Lantern
16" high including ring
5" wide
1 light candelabra



L-251GP-W
Wall Lantern
16" high including ring
6 1/2" wide
1 light candelabra
Hanging version available
with open bottom



L-251XGP-P
22" high x 9 1/2" square
The lantern body is
17" high x 9 1/2" square



L-251GP-LB4
22" overall height 6" wide,
Lantern body is 15 1/2" high
including ring
projects 9"



L-251C-H
17 1/2" high including ring
6 1/2" square



L-251-NR
Wall Lantern
11" high
5" wide



L-160
18 1/2" high 9" wide
Projects 9 1/2"
option shown -
3 piece hand-made
mirror reflector
3 candelabra lights

L-160B not shown



L-161

With mercury reflector
perfect for the car barn

Note that the
reflector focuses the
light so it is very bright
directly in front of
the lantern



L-160AH

17 1/2" high x 6" square
1 candelabra socket



L-160A

14" high 6" wide
2 candelabra lights



L-9100

The Guttman Lantern
14" high 8" wide
3 candelabra lights

L-STA0404P

20 1/2" high, 11 1/2" diameter
projects 19" from the post
frosted acrylic lens
frosted acrylic door in bottom
shown with FN-0404 copper post finial
Supplied with tapered aluminum post
in various lengths and colors.

**L-STA04-LB26**

17" high 8 1/2" diameter
projects 12 1/2"
frosted acrylic lens

L-STA04H
17 1/2" high 10" diameter
frosted acrylic lens



L-SULTANA

IS NOW L-SUL

Lantern is 13" high including the ring,
and 4" in diameter

The bracket is 16" high x 5"

It is fitted with a candelabra socket
and mica lenses.

Based on an eighteenth century
English horn lantern, we made a series of
these for the Schooner Sultana, an historic
sailing ship constructed
in Chestertown, Maryland.



L-SUL-B

17" high, including the ring

5 1/2" in diameter

It is fitted with a standard socket

OAH 18 1/2"



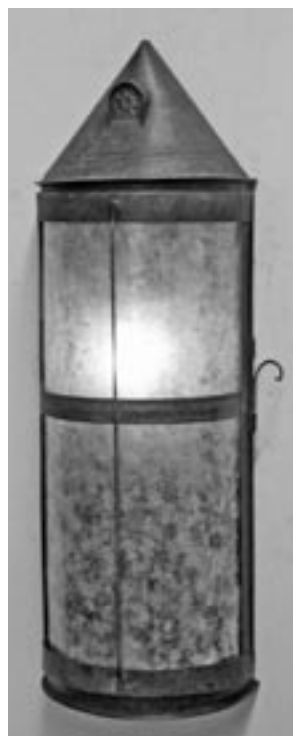
L-SUL-C

with LB-15 bracket

20 1/2" high including the ring, 8" diameter

overall height is 22", projects 10 1/2"

It is fitted with a standard socket



L-SUL-HF

11" high x 4 1/2" wide

projects 2 3/4"



L-SULB2-HF

17" high

5 1/2" wide



L-CLD0203B
32" high 13 3/4" wide
projects 15"
3 medium sockets



L-CLD0203B-LB-20

32" high 13 3/4" wide
projects 20"
Distance from center of electrical box
to the bottom of the lantern = 26 1/2"
3 medium sockets



L-CLD0203
25" high 10 1/2" wide
projects 13"
1 medium socket